

## MEMORANDUM

**DATE:** May 22, 2023

**TO:** Oceanside Bicycle and Pedestrian Committee Members  
Arlene Tendick, Toll Brothers Apartment Living  
Lillian Doherty, North County Transit District

**FROM:** Tom Lichterman, Chairman, Oceanside Bicycle and Pedestrian Committee  
Ralph Nelson, Member, Oceanside Bicycle and Pedestrian Committee

**RE:** **RECOMMENDATIONS FOR BICYCLE PARKING AND STORAGE AT OCEANSIDE TRANSIT CENTER REDEVELOPMENT PROJECT SITE**

At the March meeting of the Oceanside Bicycle and Pedestrian Committee, Arlene Tendick, representing Toll Brothers Apartment Living, indicated that they would be open to suggestions from the Committee on bicycle parking and storage options. At the April Committee meeting, Tom Lichterman and Ralph Nelson agreed to be on a subcommittee to work on this topic.

There are at least four kinds of bicycle parking needs for this project site:

- Daily commuters who will be parking their bikes for extended periods of time and boarding transit. These riders will need secure storage near transit platforms.
- Short-term OTC users who are visiting the Customer Service or retail functions at the center. These users will likely be less frequent than commuters and also probably visiting for less than an hour. A sturdy bike rack in clear sight of retail or customer service functions is probably adequate for these users.
- Apartment resident bicycle parking. Since taking their bikes upstairs to their apartments may be inconvenient, residents will need secure bike parking in the garage levels, with charging facilities for those with e-bikes.
- Bike-Share – Once the City agrees to allow a Bike-Share vendor in Oceanside, space will be needed for e-bike parking and charging stands similar to those provided by B-Cycles in Encinitas.

The subcommittee inspected existing bike parking options at the OTC and conducted an internet search of bike parking options. The subcommittee is recommending the following bike parking lockers and racks and has created a map exhibit (attached) showing where each type would be located on the property using the Bike Amenities Plan provided by Toll Brothers at the March 16, 2023 meeting.

## Secure Bike Lockers with Electronic Locks

For daily commuters and others who desire highly secure and separate bike parking, the current SANDAG Bike Locker program seems ideal. There are already four “quad” versions of their secured, electronically-locked bike lockers, with space for a total of 16 bikes, at OTC. Users need to send SANDAG a \$25 deposit for a key card that provides access using the electronic, solar-powered locks. There is no charge for the actual use of the lockers. SANDAG staff advises that NCTD and/or Toll Brothers would need to discuss further the precise needs and timing for the lockers at OTC. Since this is part of a regional bike locker program, once users are enrolled, their card will work at any SANDAG bike lockers in the county.



SANDAG Regional Bike Locker Program. This is one Quad Unit (room for 4 bikes total). Bikes access from front and back of unit.



Close-up of solar-powered electronic lock and card reader.

## Sturdy “Grid Bike Racks”

For shorter-term users and other applications where signing up with SANDAG for a bike locker is infeasible, we recommend a sturdy bike rack with vertical posts which accepts the front or rear wheel of the bike and allows securement using a common cable lock (carried by the user). There are many variations on this type of rack and many suppliers. Racks can be loaded from one side or both sides, depending on configuration. Costs are very reasonable for the amount of bikes accommodated. The subcommittee anticipates that this will be the preferred solution near the retail functions on the site and in front of NCTD Customer Service. This is likely also the best option for the Hotel’s loaner bikes if parked outside. The pictures on the next page display some options for this type from supplier Belson Outdoors ([www.belson.com/Bike-Racks](http://www.belson.com/Bike-Racks) ). Note that some of the options shown have varying space widths between the vertical bars, which could be helpful for e-bikes with fat tires.



Please note that we are not recommending the “wave” style rack as currently exists at OTC. These do not provide a good support for the bike and can result in frame damage.

**Bike “Shed” or “Station” for Apartment Residents**

The apartment residents will need secure bike storage in the sub-terranean parking garages. A Bike Shed or Station similar to this product from [www.parkwarehouse.com](http://www.parkwarehouse.com) but with electrical plugs for charging is recommended for this application. This model is used as an example only; Toll Brothers may want to invest in something with heavier grates if the garage areas will be accessible by the general public. These are available in varying sizes and configurations. An electronic lock system would likely be needed so that residents can feel comfortable that their bikes are safe.



**Map of Bike Parking Facilities**

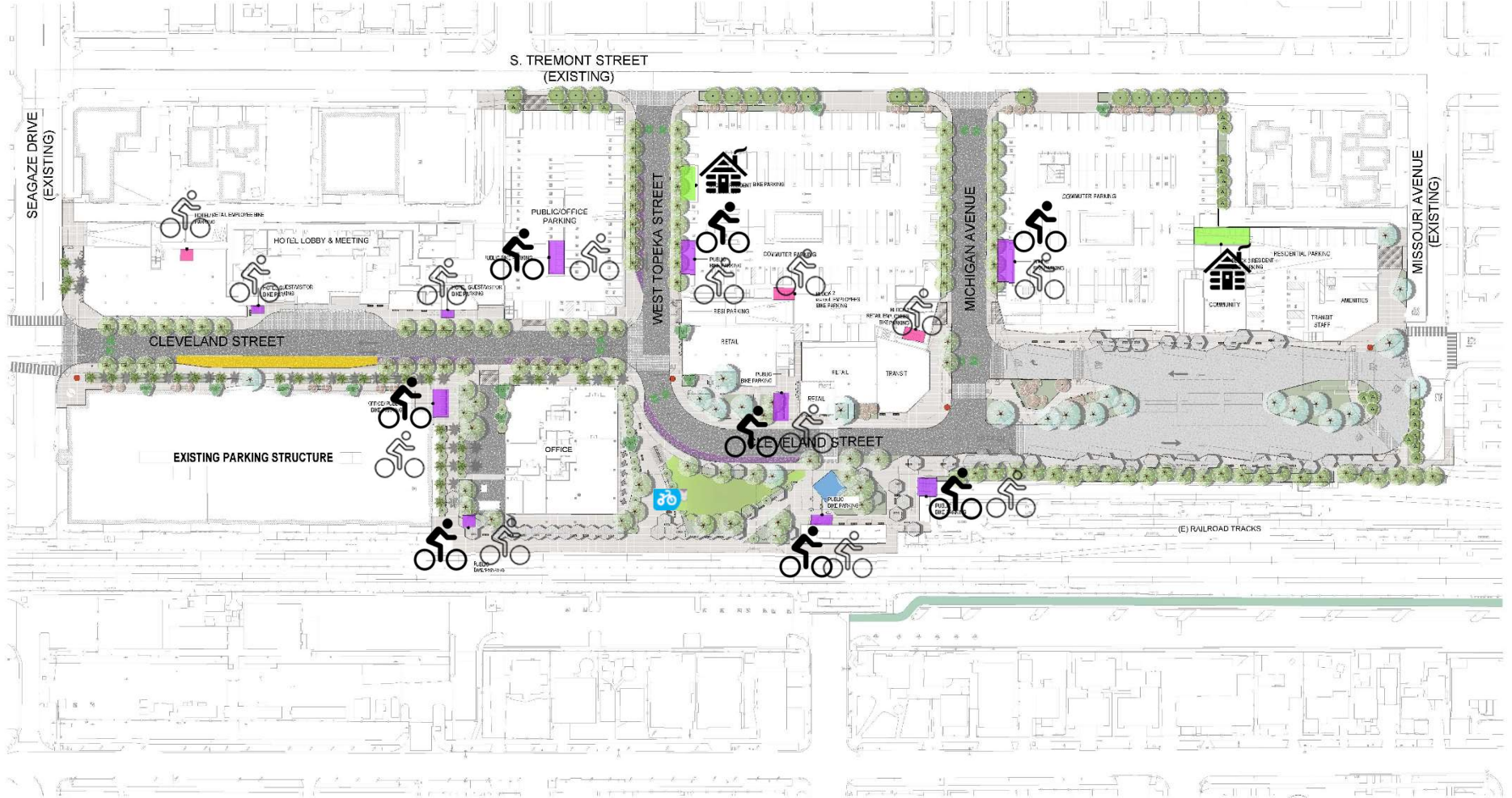
The attached site map shows the location of proposed bike parking locations by type (public, hotel/retail, resident) provided by Toll Bros., and the proposed types of bike parking equipment

(recommended by the Bike/Ped Committee) shown using icons. The legend at the bottom of the exhibit details what the icons mean. Please note that the map just displays recommended types by location, not the quantities of lockers/racks. In most “Public Bike Parking” spots, we are recommending that both lockers and racks be provided, offering the options to the users, dependent on whether they have a SANDAG Bike Locker Key Card. Lockers are not recommended at the Hotel locations, given that Hotel visitors would not likely have a SANDAG Key Card.

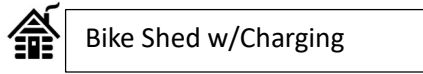
Given that currently, OTC has only four “quad” bike lockers (total of 16 bike spaces), this plan may be ambitious initially. In the event SANDAG is not able to provide sufficient quantities of lockers for all the spaces shown initially, we recommend that bike lockers be prioritized for those locations closest to the boarding platforms for buses and trains, then add more farther away as lockers become available.

### **SANDAG Locker Specifications**

Attached after the site map are the specifications and details on the SANDAG e-locker system.



- Public Bike Parking
- Hotel and Retail Bike Parking
- Resident Bike Parking



Toll Brothers Apartment Living  
2502 Hillcrest Drive  
Suite 100  
Oceanside, CA 92054



**Stantec**  
38 Technology Drive  
Irvine, CA 92618  
949-923-6300 | stantec.com



# BIKE CIRCULATION AND BIKE AMENITIES PLAN

## NCTD OCEANSIDE TRANSIT CENTER

JANUARY 10, 2023

CITY OF OCEANSIDE, CALIFORNIA